

# 399

## Boylston Street



### Description and Location

399 Boylston Street is a distinguished office property located in the heart of Back Bay, between Arlington and Berkeley Streets. Designed by CBT architects, the property features a traditional red brick façade on the first eight floors and reflective glass on the top five floors, with distinctive bay windows located on the front of the building.

The property is uniquely positioned on vibrant Boylston Street, one block from the Public Garden and the famed retail district of Newbury Street. 399 Boylston is conveniently situated just a few steps away from the Arlington Street MBTA station, and minutes from the Back Bay Commuter Rail, Storrow Drive, the Mass Pike and numerous public parking options. Additionally, the property is around the corner from the Taj Hotel, Four Seasons Hotel and a variety of premier dining and entertainment venues.

### Building Facts

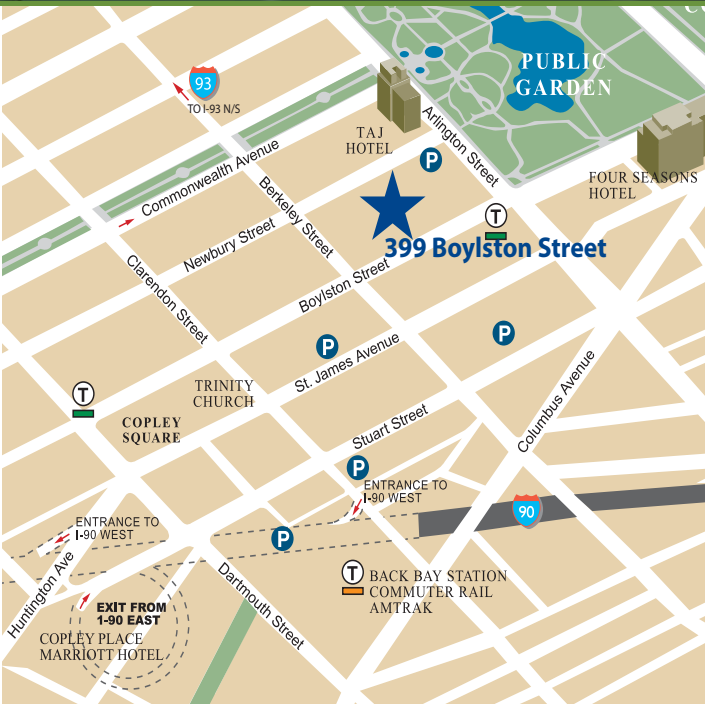
- 228,820 square feet
- 13-story office building with street-level retail

### Features and Amenities

- 15,000 – 18,000 square foot floor plates
- Recently renovated two-story, glass atrium main lobby
- Four high-speed passenger elevators in one bank
- On-site property management
- 24-hour professional security staff
- Advanced telecommunications infrastructure and service
- Ground-floor retail including Rochester Big & Tall, Jos.A Bank and Vidal Sassoon

### Available Space

- 6,370 sf on the 2nd floor (available 3/1/2011)
- 18,285 sf on the 3rd floor (available 3/1/2011)
- 15,332 sf on the 4th floor (available 3/1/2011)
- 2,338 sf on the 5th floor



SHORENSTEIN  
**Contact**



One International Place Boston, Massachusetts 02110  
www.FHOpartners.com

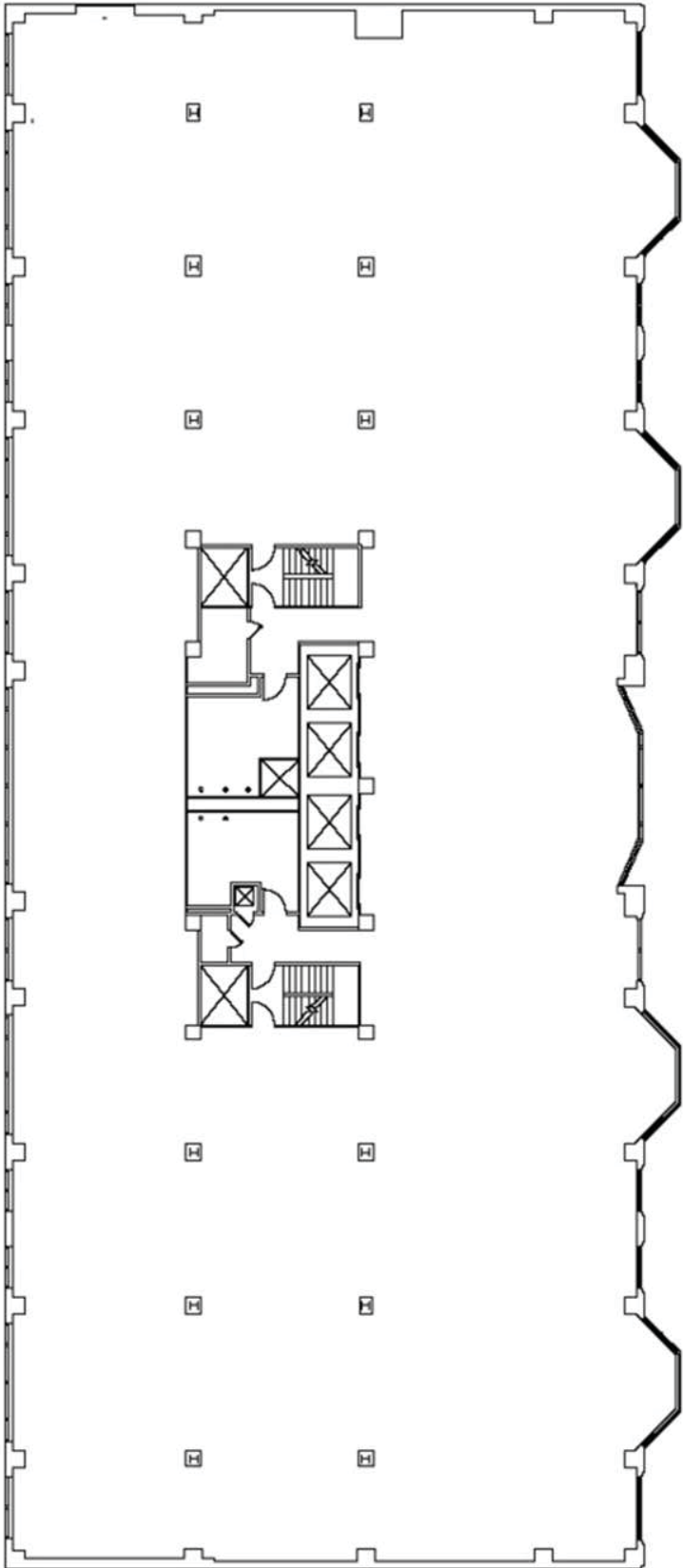
Duncan Gratton  
dgratton@fhopartners.com  
617.279.4540

Lauria Brennan  
lbrennan@fhopartners.com  
617.279.4541

# 399

## Boylston Street

5th Floor | 18,283 SF



11th Floor | 7,000 SF

